

Risk assessment methodology for the furniture industrial sector

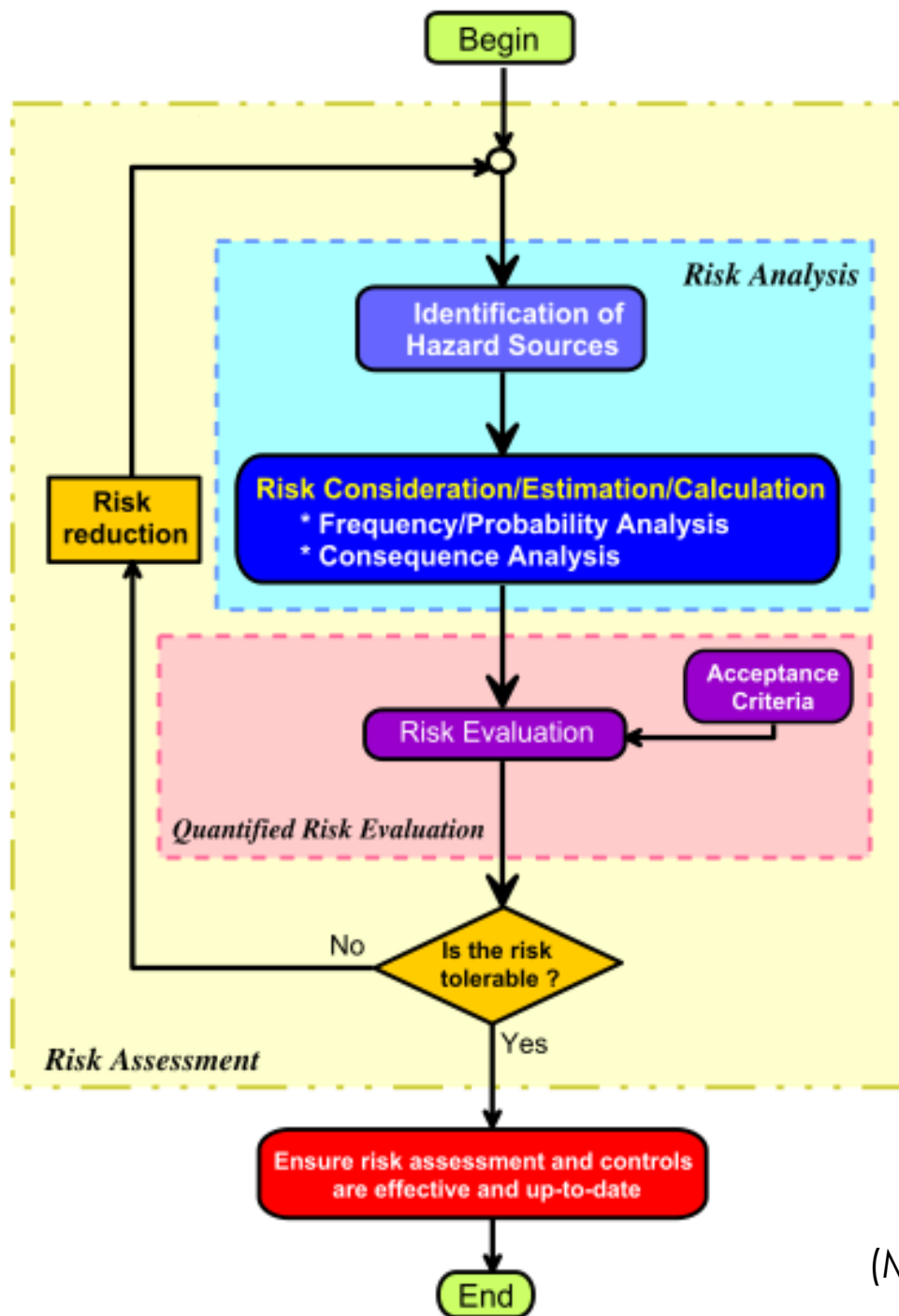
Matilde A. Rodrigues

Risk Assessment

- It is impossible for organizations to spend an unlimited budget to reduce risks to very low levels or even eliminate it.
- Companies need to take decisions about risk, in order to decide if a certain risk level is low enough or if some risk reduction measures are needed to be applied.
- Risk assessment can serve as the basis for a decision-making about risks.

Risk Assessment

- Currently is possible to verify the availability of a broad range of supporting tools.
- Some issues can be a problem to the risk assessment process:
 - ✓ The availability of reliable data.
 - ✓ The lack of practical tools.
 - ✓ The appropriateness of the criteria considered to support risk decisions and its inclusion in the risk assessment methodologies.

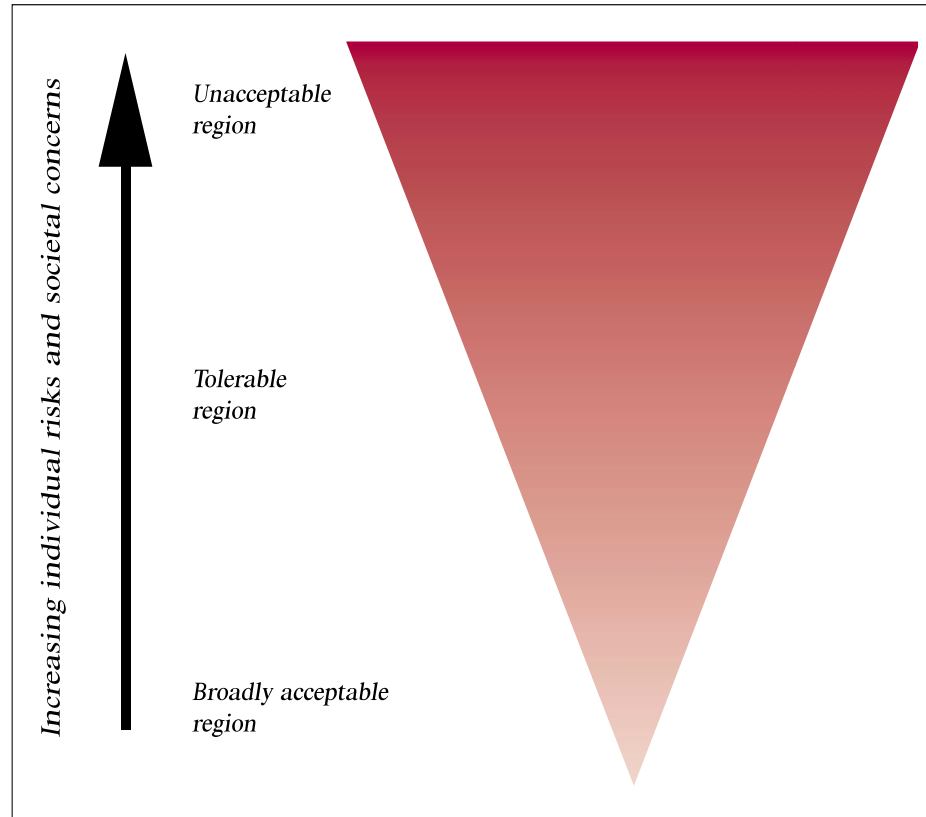


(Marhavilas et al., 2011)

Acceptance criteria

- There are some problems associated with risk acceptance criteria issue:
 - ✓ Fischhoff et al. (1978) - “How safe is safe enough?”
 - ✓ The absence of recommendations for occupational settings;
 - ✓ The inappropriateness of the criteria included in risk assessment methodologies;
 - ✓ The difficulties in the definition of acceptance criteria by the companies;
 - ✓ The different metrics used to assess risk.

Acceptance criteria

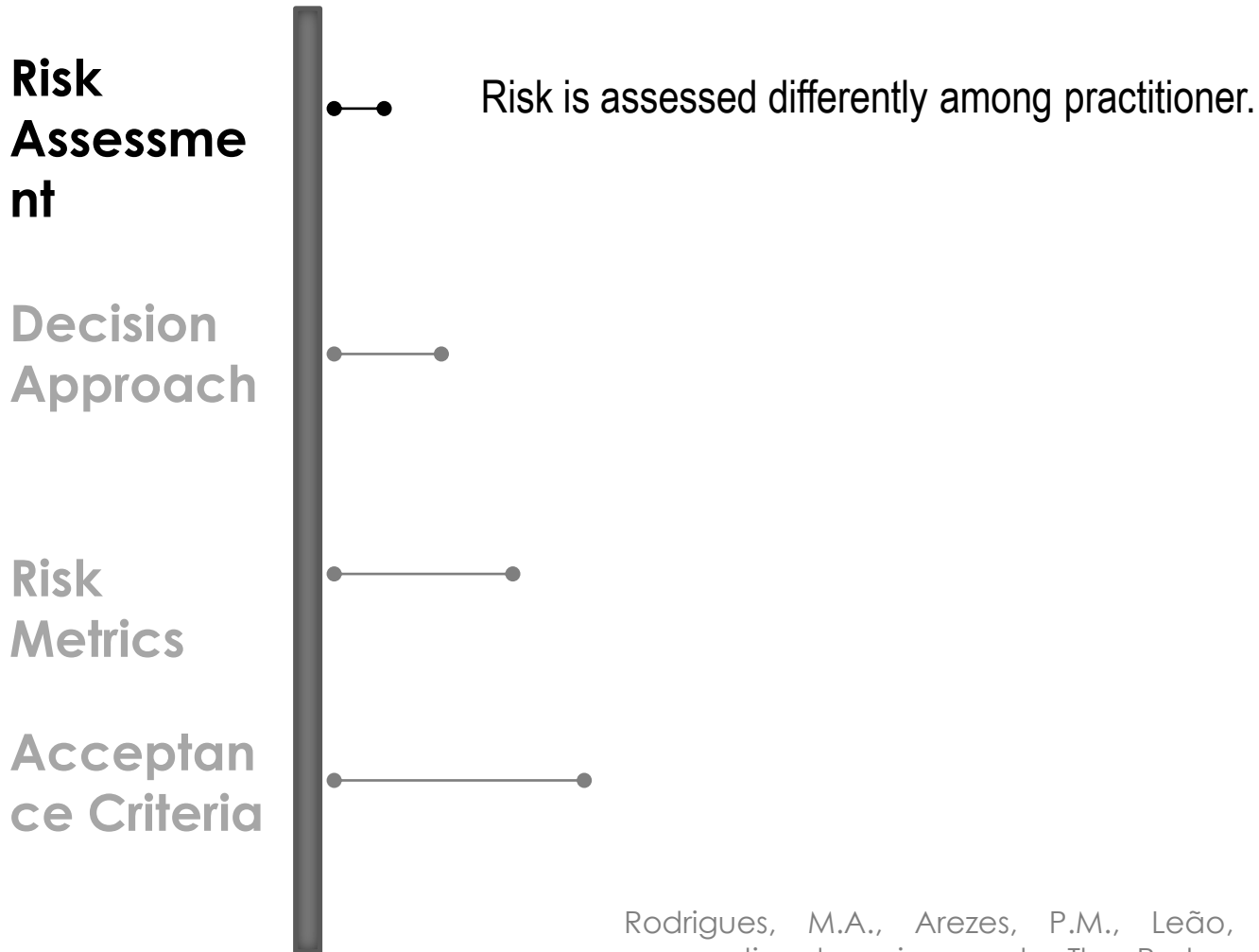


(HSE, 2001)

Acceptance criteria vs Risk Assessment Methods

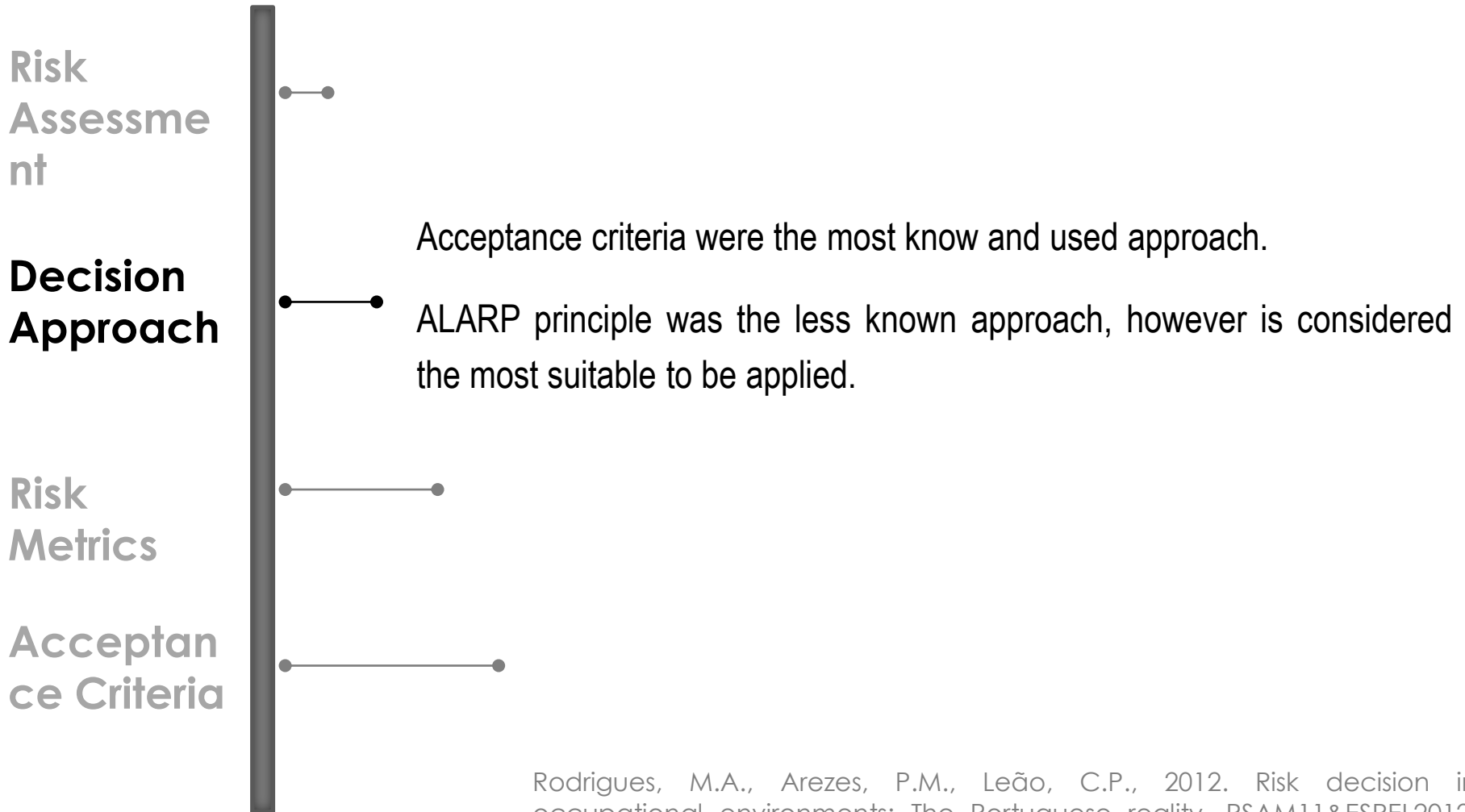
- They can be classified into three principal groups:
 - ✓ Qualitative – Qualitative acceptance criteria
 - ✓ Semi-quantitative – Quantitative acceptance criteria
 - ✓ Quantitative – Quantitative acceptance criteria

Contextualizing....



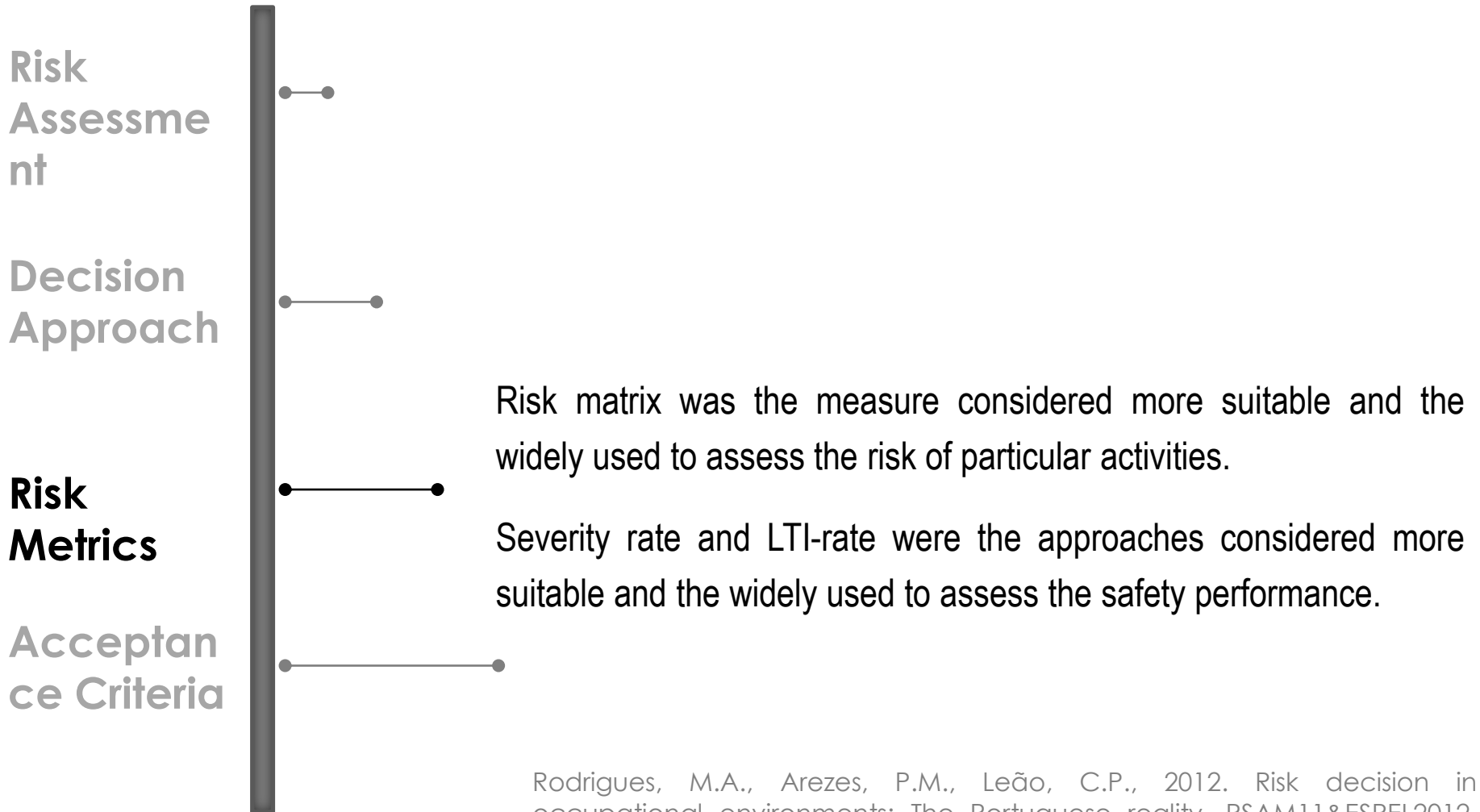
Rodrigues, M.A., Arezes, P.M., Leão, C.P., 2012. Risk decision in occupational environments: The Portuguese reality. PSAM11&ESREL2012, Vol. 2, 1366-1375, Finland

Contextualizing....



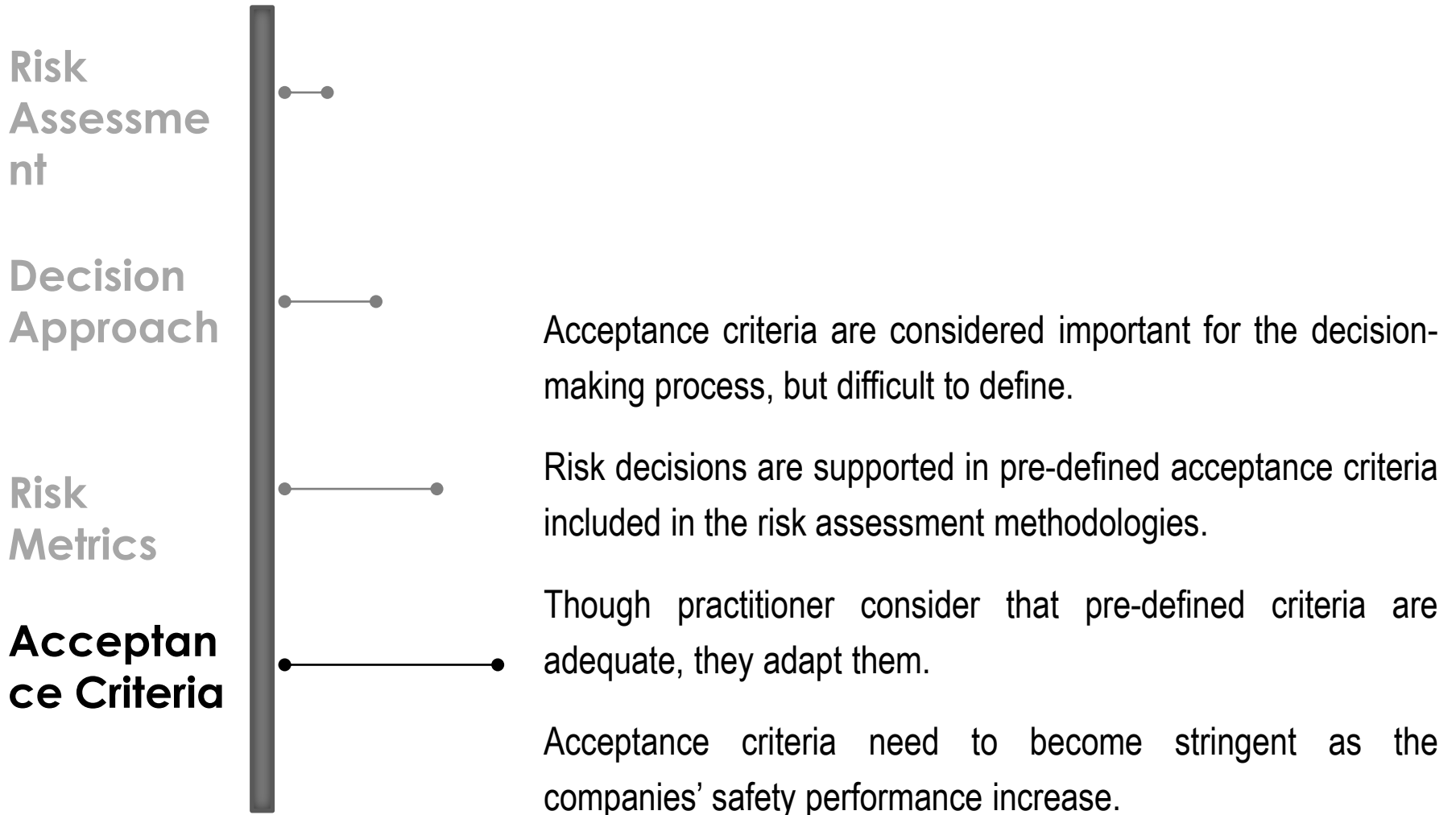
Rodrigues, M.A., Arezes, P.M., Leão, C.P., 2012. Risk decision in occupational environments: The Portuguese reality. PSAM11&ESREL2012, Vol. 2, 1366-1375, Finland

Contextualizing....



Rodrigues, M.A., Arezes, P.M., Leão, C.P., 2012. Risk decision in occupational environments: The Portuguese reality. PSAM11&ESREL2012, Vol. 2, 1366-1375, Finland

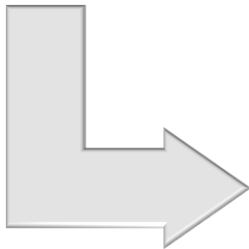
Contextualizing....



The instrument...

Model to define the risk acceptance criteria

- Based on guidelines related to major industrial hazards and other general guidelines



Case Study

- In the Portuguese furniture industrial sector

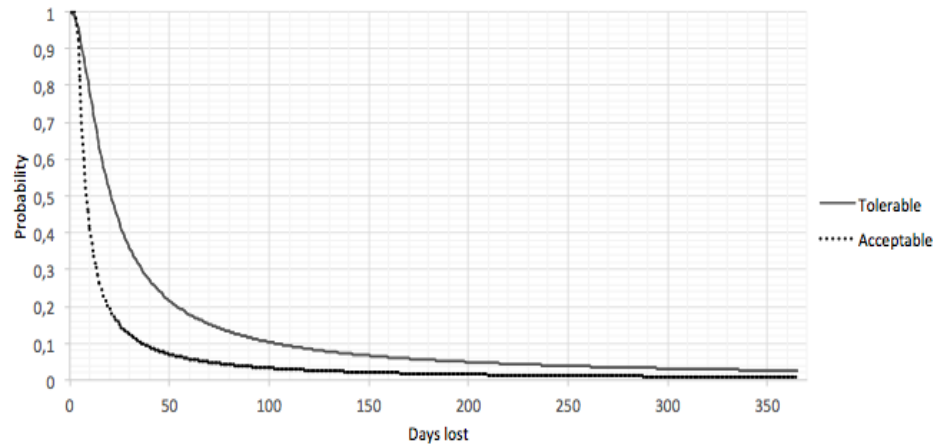
The furniture industrial sector...



The furniture industrial sector...



The instrument...



Acceptance criteria



Frequency of accidents (%)	Severity						Death
	Lost workdays						
	[0-3[[3-7[[7-21[[21-90[[90-180[≤180	
]90-100]	T	I	I	I	I	I	I
]80-90]	A	T	I	I	I	I	I
]70-80]	A	T	I	I	I	I	I
]60-70]	A	T	I	I	I	I	I
]50-60]	A	A	I	I	I	I	I
]40-50]	A	A	T	I	I	I	I
]30-40]	A	A	T	I	I	I	I
]20-30]	A	A	T	I	I	I	I
]10-20]	A	A	A	I	I	I	I
]5-10]	A	A	A	T	I	I	I
]1-5]	A	A	A	A	T	I	I
]0.5-1]	A	A	A	A	A	T	I

Risk matrix that include the defined acceptance criteria

The instrument...

Frequency of accidents (%)	Severity						
	Lost workdays						Death
	[0-3[[3-7[[7-21[[21-90[[90-180[≤180	
]90-100]	T	I	I	I	I	I	I
]80-90]	A	T	I	I	I	I	I
]70-80]	A	T	I	I	I	I	I
]60-70]	A	T	I	I	I	I	I
]50-60]	A	A	I	I	I	I	I
]40-50]	A	A	T	I	I	I	I
]30-40]	A	A	T	I	I	I	I
]20-30]	A	A	T	I	I	I	I
]10-20]	A	A	A	I	I	I	I
]5-10]	A	A	A	T	I	I	I
]1-5]	A	A	A	A	T	I	I
]0.5-1]	A	A	A	A	A	T	I

Example...

- A company recorded 10 accidents in the last year:
 - ✓ 7 accidents resulted in 1 lost workday;
 - ✓ 1 accident resulted in 16 lost workdays;
 - ✓ 2 accident resulted in 60 lost workdays.

Example...



Thank you!

mar@estsp.ipp.pt